



**EXAMWEAPONS Q&A Demo**

Microsoft 70-620

TS: Microsoft Windows Vista, Configuring

1. You implement Parental Controls game restrictions for your child on your computer. You select the TEEN rating game restriction.

Your child is still able to run some inappropriate games.

You need to prevent access to all inappropriate games.

What should you do?

- A. Configure the Game Restrictions parental control to disallow games that are not rated.
- B. Configure the Game Restrictions parental control to block games that have intense violence.
- C. Configure Windows Defender to remove high alert items.
- D. Configure Microsoft Internet Explorer in Protected Mode.

Answer: A

2. You set up Really Simple Syndication (RSS) subscription feeds on your computer.

You need to view the RSS subscription feed in XML format.

What should you do?

- A. Disable the **Turn on feed reading view** option.
- B. Enable the **Always use Clear Type for HTML** option.
- C. Configure the RSS feed to be sent to your e-mail client.
- D. Enable the **Automatically download attached files** option.

Answer: A

3. You configure a subscription to a Really Simple Syndication (RSS) feed that often includes large videos.

You need to minimize delay while watching the videos.

What should you do?

- A. Configure the RSS feed to download attached files.
- B. Configure the RSS feed to retain the most recent items.
- C. Enable the **Turn on feed reading view** option of the RSS feed.
- D. Enable the **Automatically mark feed as read when reading a feed** option of the RSS feed.

Answer: A

4. You are using Microsoft Windows Internet Explorer 7 on your computer.

You need to print only the graphic on a Web page.

How should you print the graphic?

- A. Use the **Page Setup** option and select only the graphic.
- B. Use the Print Preview feature and select only the graphic.
- C. Use the **Print** option from the **File** menu.
- D. Use the Microsoft XML Paper Specification (XPS) Document image printer.

Answer: B

5. You view a Web page by using Microsoft Windows Internet Explorer. You need to print the Web page with all the embedded graphics. The Web page is as shown in the following exhibit. (Click the **Exhibit** button.)



What are two possible ways to achieve this goal? (Each correct answer presents a complete solution. Choose two.)

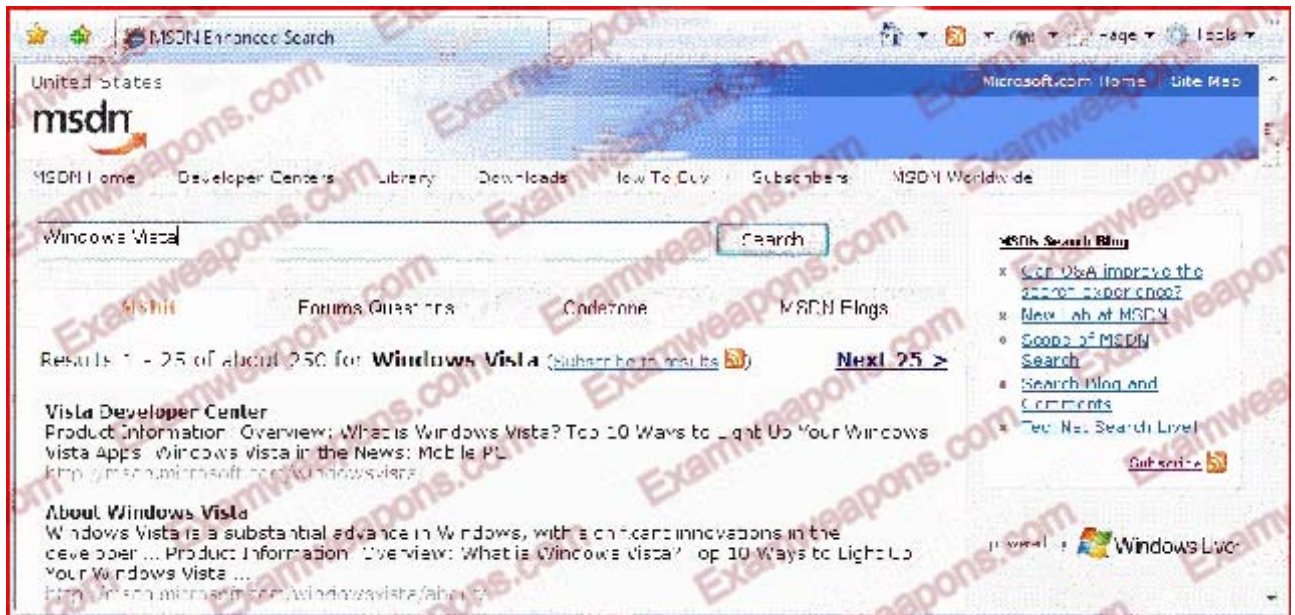
- A. Press the ALT key and print the Web page.
- B. View the Web page source code and print the output.
- C. Customize the command bar to include the **Print** button. Use this button to print the Web page.
- D. Save the Web page, and then open the Web page by using Notepad and print the document.

Answer: A AND C

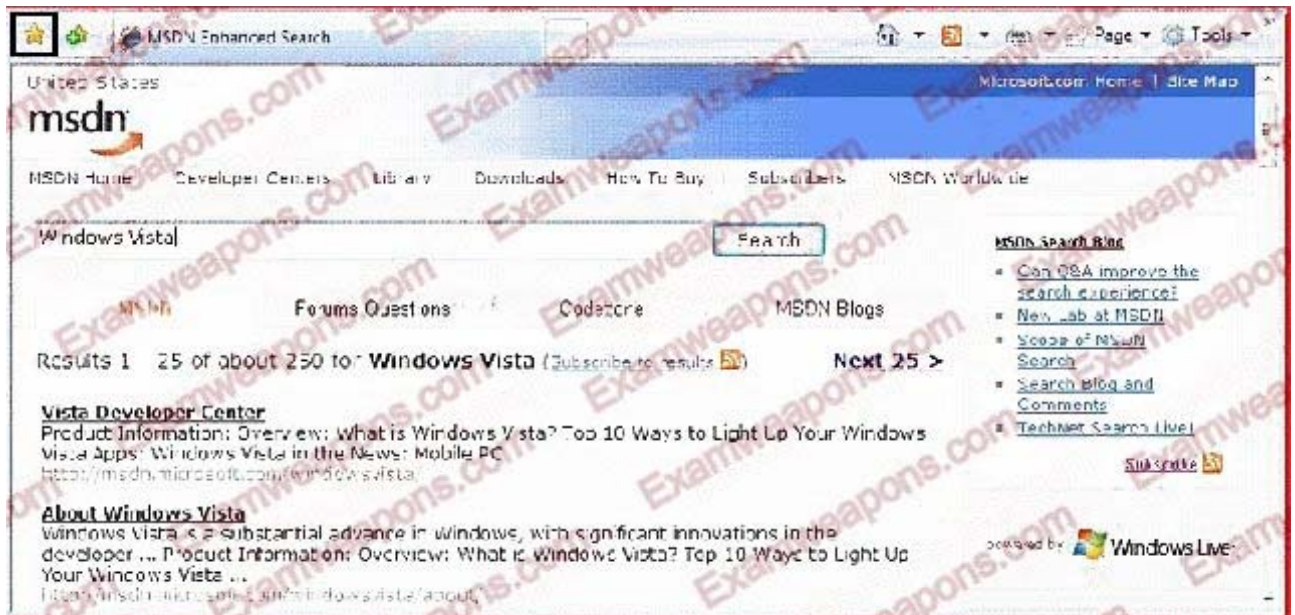
6. You subscribe to a Really Simple Syndication (RSS) feed for news updates on your computer.

You need to edit the RSS subscription properties.

What should you do? (To answer, click the right spot on the screen in the answer area.)



Answer: Area A



7. You configure Microsoft Internet Explorer 7 with a Really Simple Syndication (RSS) subscription to MSN Entertainment on your computer. Your RSS subscription Web page fails to show the information that the RSS feed Web page displays from MSN Entertainment. You need to ensure that Internet Explorer displays the current content from the RSS feed. What should you do?
- A. Enable the feed reading view in the RSS feed settings.
  - B. Configure the RSS feed properties to use the minimum interval value.
  - C. Configure the RSS feed properties to keep only the most recent 50 items.

D. Configure the RSS feed properties to automatically download attached files.

Answer: B

8. You install Microsoft Windows Vista on a computer.

You will share the computer with another user.?

You need to prevent the user from making unauthorized changes to the computer.

What should you do?

A. Add the user to the Guests group.

B. Create a standard user account for the user.

C. Create an administrator account for the user.

D. Add the user to the Remote Desktop Users group.

Answer: B

9. You need to configure the **local security policy** setting to request a user name and password when you make changes to the computer system.

What should you do?

A. Enable the **Password must meet complexity requirements** setting.

B. Enable the **User Account Control: Detect application installations and prompt for elevation** setting.

C. Configure the **Interactive logon: Prompt user to change password before expiration** setting to a value between 1 and 999.

D. Configure the **User Account Control: Behavior of the elevation prompt for administrators in Admin Approval mode** setting to the **Prompt for credentials** option.

Answer: D

10. You use two user accounts for your computer: standard user and administrator. You log on to your computer as standard user but are unable to make advanced configuration changes.

You need to make advanced configuration changes while you are logged on as a standard user.

What should you do?

A. Enable the **User Account Control: Only elevate executables that are signed and validated** option.

B. Disable the **User Account Control: Only elevate executables that are signed and validated** option.

C. Configure the **User Account Control: Behavior of the elevation prompt for standard users** setting to the **Prompt for credentials** option.

D. Configure the **User Account Control: Behavior of the elevation prompt for administrators in Admin Approval Mode** setting to the **Prompt for consent** option.

Answer: C

11. You need to identify if malware is causing performance issues on your computer.

What should you do?

- A. Start a Windows Defender scan.
- B. Run chkdsk on each drive.
- C. View the Microsoft Windows Experience Index of the system.
- D. View the System Stability Chart on the Reliability Monitor taskpad.

Answer: A

12. You run Windows Defender on your computer and receive the following warning message:

"Windows Defender Definitions haven't been updated."

You need to ensure that Windows Defender definition files are updated.

What should you do?

- A. Restart the Windows Defender service.
- B. Repair the Microsoft Location Finder program.
- C. Download and install the appropriate files from Microsoft Windows Update.
- D. Download and install the latest Windows Defender application from the Microsoft Web site.

Answer: C

13. You recently installed an application on your computer. The application is configured to automatically start. This application might cause your computer to run slower.

You need to prevent the application from auto starting without uninstalling the application.

What should you do?

- A. Use the Microsoft Windows Task Manager application to end the task for the application.
- B. Use the Control Panel application to uninstall the application. Reboot the computer.
- C. Use the Software Explorer application to disable the application. Reboot the computer.
- D. Use the Services application to disable the Application Experience service, and then launch the application.

Answer: C

14. You run a Windows Defender scan on your computer. You notice a valid program listed in Quarantined Items.

You need to use this program on your computer.

What should you do?

- A. Reinstall the application to another location.
- B. Restore the program from the Quarantined Items list.
- C. Remove the program from the Quarantined Items list.
- D. Repair the program from the **Programs** option in Control Panel.

Answer: B

15. You run a Windows Defender scan on your computer system. The scan identifies one of your applications as having potentially unwanted behavior.

You need to continue to use the application. You also need to stop Windows Defender from alerting you about this application.

Which Windows Defender option should you use?

- A. **Ignore**
- B. **Remove**
- C. **Quarantine**
- D. **Always Allow**

Answer: D

16. You need to receive alerts when unanalyzed software is detected on your computer. You must achieve this goal without sending information to Microsoft.

What should you do?

- A. Confirm that Windows Defender is not subscribed to the Microsoft Spynet online community. Select the **Use heuristics to detect potentially harmful or unwanted behavior by software that hasnt been analyzed for risks** checkbox in Windows Defender.
- B. Configure Windows Defender with a basic membership to the Spynet online community.
- C. Configure Windows Defender with an advanced membership to the Spynet online community.
- D. Configure the Software Explorer option in Windows Defender to display software for all users.

Answer: A

17. The pop-up blocker is enabled on your computer.

A Web site that you visit regularly uses pop-ups.

You need to view the pop-ups from this Web site while maintaining the highest level of security for all other Web sites.

What are two possible ways to achieve this goal? (Each correct answer presents a complete solution. Choose two.)

- A. Disable the pop-up blocker.
- B. Add the URL of the Web site to the list of trusted sites.
- C. Add the URL of the Web site to the list of allowed sites.
- D. Enable the **Automatic Website Checking** option on the Phishing filter.
- E. Visit the Web site and select the **Always allow pop-ups from this site** option.

Answer: C AND E

18. You need to reduce the level of access that a malicious Web site might have to your computer.

What should you do?

- A.Start a Windows Defender scan.
- B.Enable Microsoft Windows Internet Explorer Phishing Filter.
- C.Enable Microsoft Windows Internet Explorer Pop-up Blocker.
- D.Confirm that Microsoft Windows Internet Explorer Protected Mode is enabled on the Internet security zone.

Answer: D

19.You share your computer with other users.

You install a new Microsoft Windows Internet Explorer add-on to view videos on the computer. You discover that this add-on conflicts with existing add-ons that other users frequently require. You need to ensure that you are able to view videos without affecting other users.

What should you do?

- A.Uninstall the new Windows Internet Explorer add-on.
- B.Log on as an administrator and disable the new Windows Internet Explorer add-on.
- C.Direct other users to log on and disable the new Windows Internet Explorer add-on.
- D.Select the **Turn off Automatic Website Checking** option for the Phishing filter.

Answer: C

20.You need to remove any Microsoft Windows Internet Explorer 7 add-ons in Microsoft Windows

Vista computers that do not have prior approval from the following authorities:

Microsoft

System manufacturer

Service provider

What should you do?

- A.Remove any add-ons that are not found in the list of downloaded ActiveX controls.
- B.Remove any add-ons that are not found in the list of add-ons used by Windows Internet Explorer 7.
- C.Remove any add-ons that are not found in the list of add-ons that run without requiring permission.
- D.Remove any add-ons that are not found in the list of add-ons that are at present loaded in Windows Internet Explorer 7.

Answer: C