



EXAMWEAPONS Q&A Demo

Cisco 642-845

Optimizing Converged Cisco Networks

EXAMWEAPONS 642-845 Demo

1. What are two things that an access point (AP) does when it receives an 802.11 frame from a Wi-Fi Multimedia (WMM) client? (Choose two.)

- A. EAP-FAST/EAP-FAS Access Point Protocol (LWAPP) packet is used to generate an 802.1p priority value in the packets, which are sent to an Ethernet switch by the controllers.
- B. The AP will police the 802.11e priority value to ensure it does not exceed the maximum value allowed for the QoS policy that is assigned to that client.
- C. Once the LWAPP packet is received, the AP generates the IEEE 802.1p priority value.
- D. The AP will map the 802.11e priority value to the DSCP value.
- E. The AP will map the DSCP value to the outer LWAPP frame.

Answer: BD

2. Which two statements are correct about configuring AutoQoS on a Cisco router? (Choose two.)

- A. AutoQoS can be implemented on only one side of a link.
- B. The interface does not have to have an IP address associated with it.
- C. The AutoQoS feature cannot be configured on a Frame Relay DLCI if a map class is attached to the DLCI.
- D. In a Frame Relay network, AutoQoS cannot be configured if a DLCI is already assigned to the Frame Relay subinterface.

Answer: CD

3. What is the function of a Cisco CallManager?

- A. Cisco CallManager serves as a call routing and signaling component for IP telephony.
- B. Cisco CallManger provides gateway services from IP phones to analog phones or trunks.
- C. Cisco CallManger performs address lookup and resolution, and translation between E.164 and IP addresses.
- D. Cisco CallManger initializes voice compression.

Answer: A

4. Which two signaling protocols are supported on a Cisco voice gateway router to connect to the PSTN network? (Choose two.)

- A. channel associated signaling (CAS)
- B. common channel signaling (CCS)

- C. H.323
- D. Skinny Client Control Protocol (SCCP)
- E. Media Gateway Control Protocol (MGCP)
- F. session initiation protocol (SIP)

Answer: AB

5. Which two statements are true about voice ports on a router? (Choose two.)
- A. Calls to the PSTN can be made via the use of FXO or T1/E1 trunk ports.
 - B. Calls to the PSTN can be made via FXS or T1/E1 trunk ports.
 - C. Analog and IP phones can be connected to the VoIP network via FXO or T1/E1 trunk ports.
 - D. Calls between analog phones that are attached to the FXS ports in a VoIP network can be completely processed by voice-enabled routers.

Answer: AD

6. What are two reasons to implement H.323 gatekeepers? (Choose two.)
- A. to eliminate the need for VoIP gateways
 - B. to scale a VoIP installation with multiple gateways
 - C. to provide call admission control and limit the number of simultaneous calls on the network
 - D. to meet the requirement to control H.323 gateways on a LAN
 - E. to accept call requests and reduce the load on the gateway

Answer: BC

7. Which statement is true about the capabilities of a voice gateway router?
- A. Voice gateways with analog interfaces need a gatekeeper to convert analog signals into digital format before voice is encapsulated into IP packets.
 - B. Voice gateways need a gatekeeper to interconnect the VoIP networks with the PSTN network.
 - C. Voice gateways with Cisco Unified CallManager Express (CME) can permanently act as a call agent for IP phones.
 - D. Voice gateways equipped with a DSP module can take the role of the call agent during WAN failure.

Answer: C

8. Which header or set of headers does cRTP compress?

- A. Layer 2
- B. Layer 3
- C. Layer 4
- D. Layer 2 and Layer 3
- E. Layer 3 and Layer 4

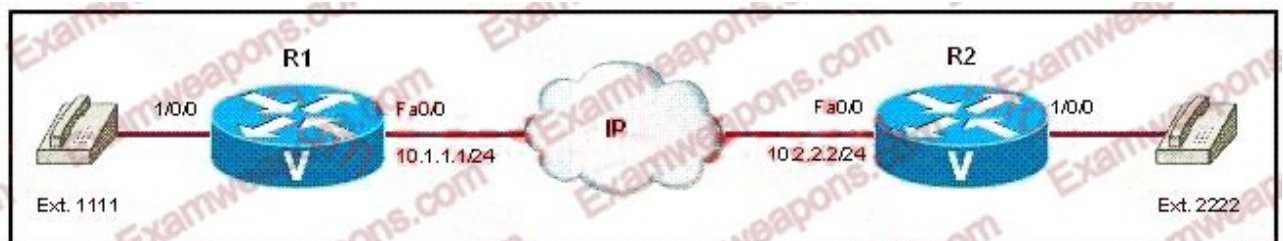
Answer: E

9. Which traffic descriptor is used for marking?

- A. weighted RED (WRED) orange or green labels
- B. modular QoS CLI (MQC) application layer tags
- C. Deficit Round Robin (DRR) precedence bits
- D. header compression tags
- E. MPLS experimental bits
- F. FIFO Layer 2 descriptor labels (L2DL)

Answer: E

10. Refer to the exhibit. Routers R1 and R2 are to be configured as VoIP gateways. On the basis of the information in the exhibit, which dial peer configuration would be valid?



- A. R1(config)# dial-peer voice 2 pots
R1(config-dial-peer)# destination-pattern 1111
R1(config-dial-peer)# session target ipv4:10.1.1.1
- B. R1(config)# dial-peer voice 2 voip
R1(config-dial-peer)# destination-pattern 1111
R1(config-dial-peer)# session target ipv4:10.1.1.1
- C. R2(config)# dial-peer voice 2 pots
R2(config-dial-peer)# destination-pattern 1111
R2(config-dial-peer)# session target ipv4:10.1.1.1

```
D. R2(config)# dial-peer voice 2 voip
R2(config-dial-peer)# destination-pattern 1111
R2(config-dial-peer)# session target ipv4:10.1.1.1
```

Answer: D

11. To provide quality of service (QoS) for videoconferencing traffic in an IEEE 802.1q network, which class of service (CoS) value should be used in the 3-bit, user priority bits (PRI) field?

- A. The PRI field should contain the CoS value of 010.
- B. The PRI field should contain the CoS value of 011.
- C. The PRI field should contain the CoS value of 100.
- D. The PRI field should contain the CoS value of 101.
- E. The PRI field should contain the CoS value of 110.
- F. The PRI field should contain the CoS value of 111.

Answer: C

12. Which two statements about queuing mechanisms are true? (Choose two.)

- A. An advantage of the round-robin queuing algorithm is its ability to prioritize traffic.
- B. Priority queuing (PQ) uses a dynamic configuration and quickly adapts to changing network conditions.
- C. Serial interfaces at E1 speed (2.048 Mbps) and below use weighted fair queuing (WFQ) by default.
- D. Custom queuing (CQ) uses a dynamic configuration and quickly adapts to changing network conditions.
- E. Weighted fair queuing (WFQ) is the simplest of queuing method.
- F. When no other queuing strategies are configured, all interfaces except serial interfaces at E1 speed (2.048 Mbps) and below use FIFO by default.

Answer: CF

13. What are three facts of control plane policing? (Choose three.)

- A. a set of rules that can be established and associated with the ingress and egress ports of the control plane
- B. improves performance of the control plane by marking control plane packets with DSCP EF
- C. protects the control plane on a router from DoS attacks

EXAMWEAPONS 642-845 Demo

- D. treats the control plane as a separate entity with its own ingress (input) and egress (output) ports
- E. provides the control plane with a separate token bucket
- F. enhances security of the control plane by tunneling packets to and from the control plane

Answer: ACD

14. Which two statements best describe enhanced wireless security encryption? (Choose two.)

- A. TKIP protects RC4 encryption keys.
- B. CKIP and TKIP protect AES encryption keys.
- C. TKIP encryption is more processor intensive than AES encryption is.
- D. WPA requires TKIP encryption, whereas WPA2 supports AES encryption.
- E. WPA requires AES encryption, whereas WPA2 supports TKIP encryption.

Answer: AD

15. Which three methods would help prevent critical network-traffic packet loss on high speed interfaces? (Choose three.)

- A. policy routing
- B. increase link capacity
- C. WRED
- D. CBWFQ
- E. LFI
- F. WFQ

Answer: BCD

16. Which two statements regarding the Wireless LAN Solution Engine (WLSE) are true? (Choose two.)

- A. To support fault and policy reporting, the WLSE requires a Wireless Control System (WCS).
- B. When WLSE detects an AP failure, it automatically increases the power and cell coverage of nearby APs.
- C. WLSE requires the 2700 location appliance to offer location tracking.
- D. WLSE can locate rogue APs and automatically shut them down.
- E. WLSE configuration is done using the command line interface (CLI) or a WEB based template.

Answer: BD

17. How does weighted random early detection (WRED) prevent packet loss?

- A. increases link capacity
- B. increases buffer space to accommodate bursts of traffic from delay-sensitive applications
- C. provides prioritized forwarding for drop-sensitive applications
- D. drops lower priority packets before congestion occurs
- E. separates traffic into as many as 64 queues that can be uniquely prioritized

Answer: D

18. Which functionality in the Cisco IOS software will enable a router to permanently act as a call agent for IP phones?

- A. Cisco CallManager
- B. Cisco CallManager Express (CME)
- C. Cisco CallManager Gateway (CMG)
- D. Cisco CallManager Voice Gateway (CMVG)
- E. Media Gateway Control Protocol (MGCP)

Answer: B

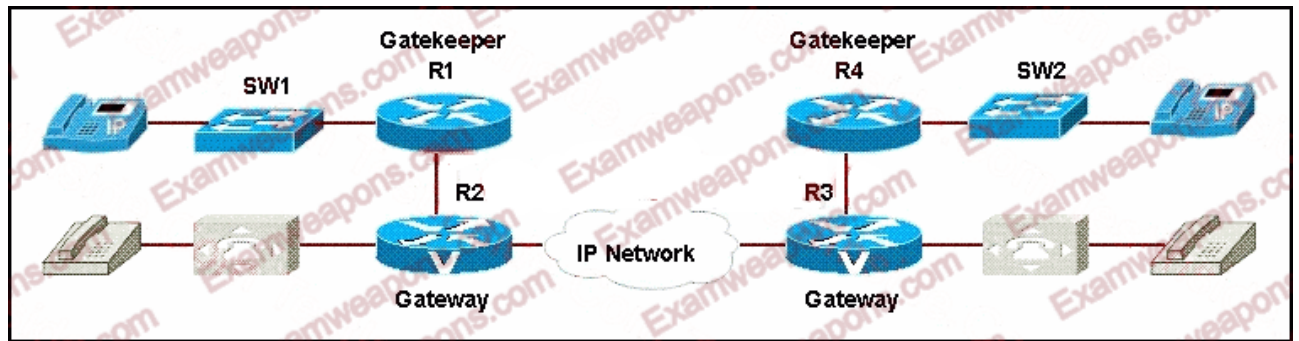
19. AutoQoS takes the interface type and bandwidth into consideration when implementing what three QoS features? (Choose three.)

- A. FECN
- B. LLQ
- C. WRED
- D. LFI
- E. cRTP
- F. CBWFQ

Answer: BDE

20. Refer to the exhibit. The network has been configured with H.323 gateways and gatekeepers as shown. Which statement is true when a call is placed?

EXAMWEAPONS 642-845 Demo



- A. A gatekeeper is contacted to determine the correct local gateway to use.
- B. A gateway will receive the call and forward a call request to the local gatekeeper.
- C. A gateway will receive the call and forward a call request to the gatekeeper on the other side of the WAN.
- D. A gatekeeper will receive the call and forward a call request to the remote gateway.

Answer: B